

SIMPLER

Integration of information

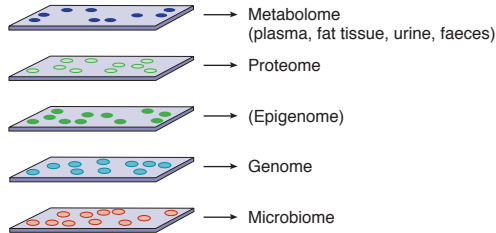
Questionnaire data

Sociodemographic data
Diet
Dietary supplements
Physical activity
Smoking, alcohol
Sleep
Family disease history
Over-the-counter drugs
Social network
Well-being

Clinical examination data

Body composition by DXA
(fat, lean and bone mass)
Anthropometrics
Blood pressure
Grip strength
Gait speed
Timed up and go test
Cognitive function
Clinical biochemistry
Lifestyle interview
Biological age

Omics data



Registry data

Data from 20 registries:
Prevalent disease
Incident disease
Surgery procedures
Data from quality registries
Prescribed drugs
Mortality, cause of death
Family disease history
Occupation
Socioeconomic data
Geographic information

Biobank

Plasma
Serum
Whole blood
Buffy coat
Urine
Fat biopsies
Saliva
Faeces
DNA



Knowledge network

Analyses

